



Superintendent Update

The Collaborative to Support Initially Licensed Professionals

Collaborative Highlights over the Years

Item 1

Networking / Collaboration

Item 2

Resources – BTWP -- Websites

Item 3

Partnerships – IHEs -- DPI

Item 4

Lateral Entry Orientation Project

– Online Modules – EDUC 225

Item 5

Annual Conference(s)

– Fall Drive-In -- Spring

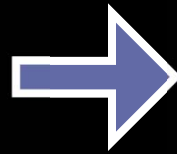
Item 6

TWC & Turnover Data Review

– Help Drive Support Efforts



Current Year Projects



Data
Analysis
for Program
Planning

The
Principal
and BT
Support

LEA Best
Practices



Collaborative Data

- TWC Collaborative Results
- TWC Collaborative New Teacher Results
- Teacher Turnover Collaborative
 - 2012-13
 - 2013-14
 - Comparison
- Beginning Teacher Support
 - Survey
 - Results



Moving Forward

- We need your continued support
- How can we better support you?



“Never doubt that a small group of committed people can change the world. Indeed, it is the only thing that ever has.”

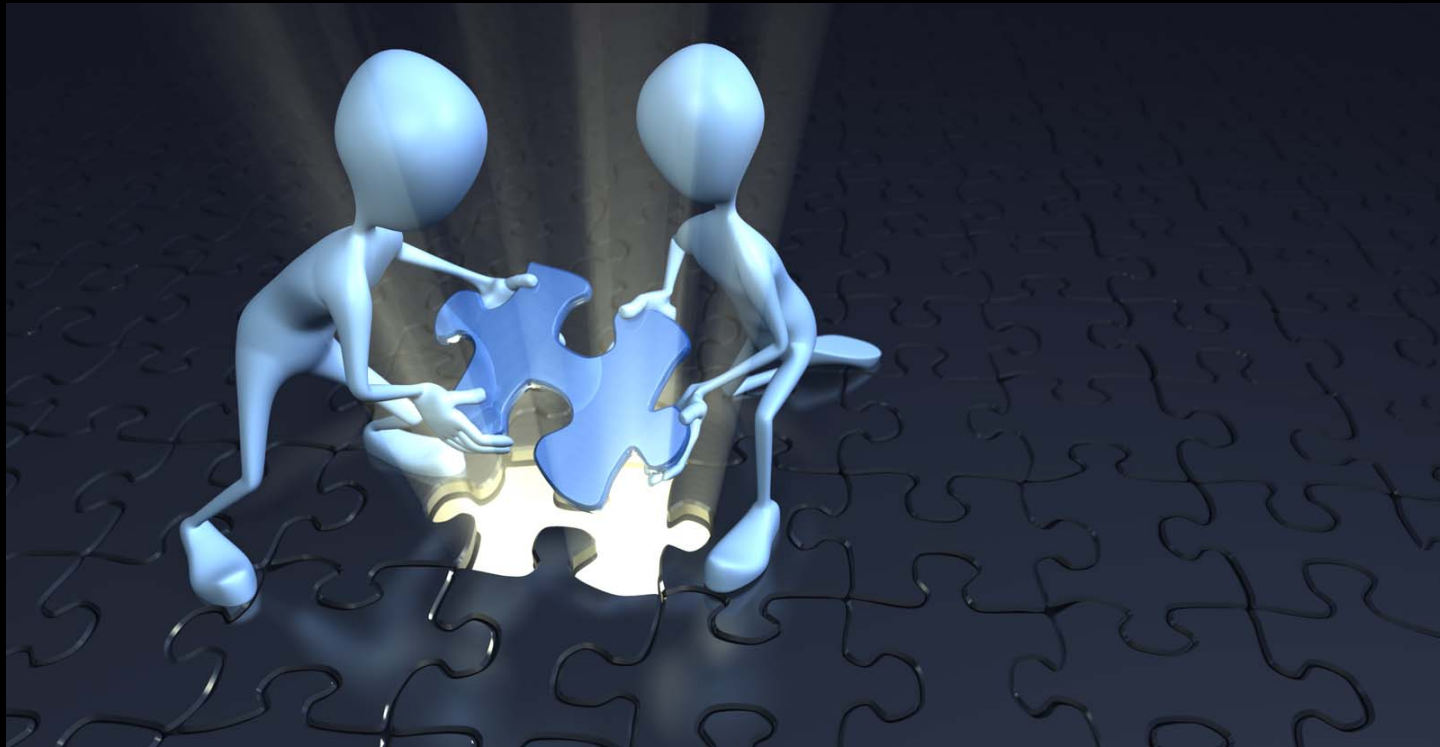
- Margaret Mead





Merry Christmas





**You are an important piece to the puzzle.
Thank you for all your support!
-- The Collaborative**

